



# Eltham Newsletter

November 2024

Eltham Business & Professional Association

For news, general feedback, advertising, and digital subscription, please contact us at [elthambizassn@gmail.com](mailto:elthambizassn@gmail.com)

## Taranaki Fringe Garden Festival: Real Gardens for Real People, A Blossoming Success

The 20th Taranaki Fringe Garden Festival (TFGF) recently concluded, running from 1-10 November, 2024, and once again showcasing why Taranaki is a must-visit destination for garden enthusiasts. Every year, this festival draws visitors from across New Zealand and beyond, shining a spotlight on the beauty, creativity, and passion that define our region's gardens.



Lakeside Garden (#41), Photo Credit: Taranaki Fringe Garden Festival



Dondo (#14) in rural Inglewood  
Photo Credit: Taranaki Fringe Garden Festival

### A Festival to Celebrate and Inspire

With over 35,000 visits recorded last year, the TFGF has long been a favorite for both locals and travelers. This year's festival continued to captivate audiences with its diverse array of over 40 private gardens and several public spaces, each offering something unique—from quaint cottage gardens to sprawling native retreats.

The festival isn't just about enjoying beautiful spaces; it's about inspiration. Visitors leave brimming with ideas, eager to bring new life to their own gardens. Whether you're a gardening pro or simply appreciate the beauty of nature, the TFGF offers something for everyone.



### Eltham's Role in the Festival

Eltham proudly featuring The Village Gallery (#10). This unique destination blended garden artistry with creative expression, offering visitors stunning pieces to enhance their own spaces. But imagine the possibilities if more of Eltham's gardens were part of the festival!



Eltham Village Gallery (#10), pottery by Donna Hitchcock (left) and Margaret Foley (right)

Our town has a wealth of hidden gems, from cozy urban gardens to expansive rural landscapes. By joining the festival, local gardeners have a chance to share their work with thousands of visitors, boosting our town's profile and providing a welcome economic boost.

### Looking to the Future: Could Your Garden Be Next?

The TFGF is always on the lookout for fresh ideas and new gardens. Whether your garden is a neat and tidy haven or a wild and whimsical retreat, you could help make next year's festival even more special.

Entries for the 2025 festival close on November 28, 2024. Hosting a garden is an opportunity to showcase your creativity, connect with like-minded enthusiasts, and contribute to an event that highlights the very best of Taranaki. If you're interested in sharing your garden, contact Anne Clough at 021 450 770 or email taranakigardentrust@gmail.com.

TFGF highlights the beauty, talent, and creativity of gardeners throughout Taranaki, and Eltham has an important role to play. Whether you're a visitor or a future host, the festival is a reminder of the incredible things that can bloom in our own backyards.

## Eltham Celebrates Care Group Upgrades

Earlier this month, the Eltham community gathered to celebrate a significant milestone: the completion of major upgrades to the Eltham Community Care Group's facilities, which house the Eltham Food Bank and the "Secondthreads" op shop. A standout feature of these improvements is the installation of a walk-in chiller/freezer unit, funded through a generous grant from the Toi Foundation. Additionally, the op shop's working area has been expanded, offering volunteers a more comfortable and efficient space to serve the community.



from left: Gary Rodgers, Marilyn Gernhoefer, Janis Boyes, Niki Greendale, Lisa Haskell from Toi

Continued on next page---->



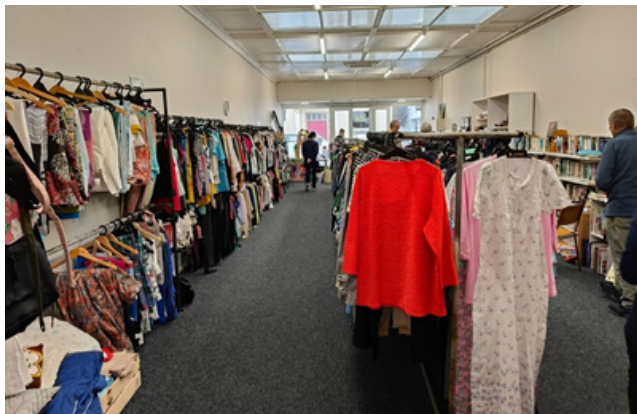
## Continued from previous page

These upgrades mark a new chapter for the Eltham Community Care Group, a cornerstone of local support for over 30 years. Established by Eltham's combined churches, the Food Bank and op shop continue to provide essential services, ensuring residents in need have access to food, clothing, and other basics.

The upgrades wouldn't have been possible without the generous support of local businesses and organisations. The group extends its deepest gratitude to ITM, Eagars, Steelformers, and Lloyd Gernhoefer Contracting for their sponsorships. Grateful thanks also go to Eltham Lunch



"Secondthreads" op shop stock



"Secondthreads" op shop

Shack for their continuous support and to Julian Greendale, Builder, for the great work done in achieving the renovations. Ongoing contributions from Anzco and Fonterra, along with the kindness of Eltham's residents, have been vital in sustaining the Food Bank and op shop over the years.

The Eltham Food Bank is the New Zealand food network hub for central Taranaki food banks. Locally, it serves residents in Kaponga, Ngaere, Te Roti, and Eltham & Districts. Those seeking assistance can access the Food Bank by providing personal ID and proof of their current address.

Their work is powered by community generosity. Residents can contribute through donations of food, clothing, or funds. These contributions can be dropped off on the Food Bank's open day, every Wednesday, or arranged via the contact details on the Food Bank door. Volunteer opportunities are available at the E-Kai Garden on Bridge Street and the Secondthreads op shop, offering a meaningful way to give back to the community.

Looking ahead, the group is gearing up for the annual Christmas Street Appeal on 2nd December. This cherished event, supported by the Eltham Lions Club and the Volunteer Fire Brigade, invites residents to leave nonperishable food items at their letterboxes. The sound of sirens signals the collection, helping to stock the Food Bank for the holiday season and beyond.

For decades, the Eltham Community Care Group has been a vital resource, fostering compassion and cooperation. With its upgraded facilities and strong local support, it's ready to continue making a difference for years to come.

## New Owner Takes Over Eltham Dental Centre

Eltham Dental Centre has entered a new chapter with Dr. Jivarne Joseph taking over from long-serving dentist Wendy Pitman, who recently retired after decades of dedicated service. Dr. Joseph and his family have recently moved to the area and are settling into their new roles in Eltham.

Taking over a busy practice with an existing client base is no small task, and Dr. Joseph has a significant workload as he focuses on providing continuity of care. For those seeking information or assistance, the community is encouraged to contact the Dental Centre directly.

We wish Dr. Joseph and his team all the best during this transition and look forward to sharing more updates in the future.



## Eltham Business & Professional Association Holds AGM

The Eltham Business & Professional Association held its AGM on 6th November, 2024, at the Eltham Fire Station. Attendees included Ian Murray, Olwyn Duthie, Jiong Sun and several business owners, committee members, with apologies from a few.

Ian Murray provided an overview of the year, highlighting successful grant applications for administration, Christmas Parade, camera maintenance, and local events. He introduced Jiong Sun, who has been instrumental in launching the community newsletter, organising the business directory, and managing membership.

Exciting initiatives include the Cheese Scone Night and collaboration with the Lions Club for the Christmas Parade and Market. The newsletter and business directory were reviewed, with plans to continue their development. Sponsorship is sought to support directory printing.

The meeting featured a presentation from Di Gleeson, manager of Central Taranaki Safe Community Trust, who shared updates on community safety initiatives, such as patrols, swimming lessons, AED training, and more.

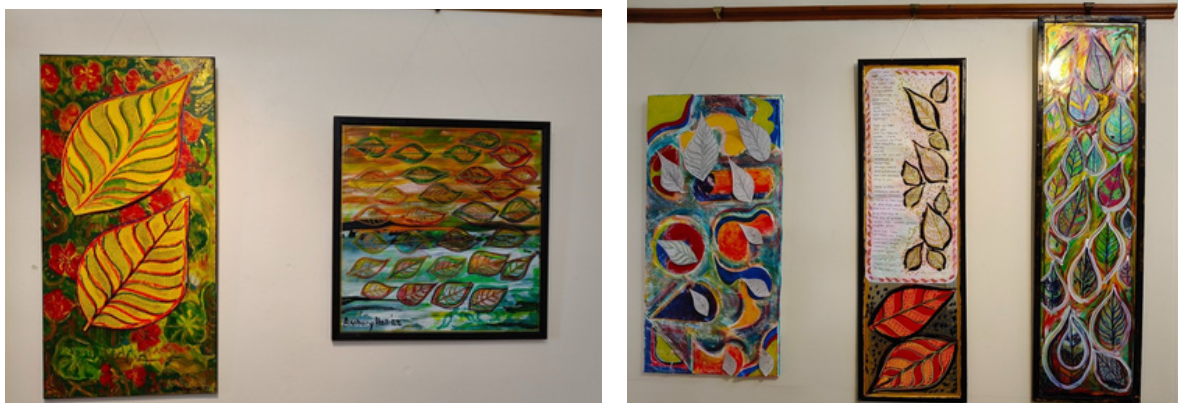
The association is committed to supporting local businesses and enhancing community engagement. The next meeting is scheduled on February 2025, and members are encouraged to stay involved and share their feedback.

## "Farewell Autumn" Exhibition at Eltham Gallery An Exploration of Loss and Resilience

From 20 November to 14 December, artist Ambury Hall invites the community to experience his deeply personal exploration of loss and resilience. Inspired by the universal theme of saying goodbye, Ambury's latest exhibition draws from Farewell to Stromness, a musical piece that captures the sorrow of leaving one's homeland.

Ambury's work challenges traditional depictions of grief. Instead of the muted tones often associated with loss, he embraces vibrant colors to celebrate the enduring impact of those we've lost. "I want viewers to see that loss isn't something we simply 'get over,'" Ambury explains. "It becomes part of who we are, helping us grow and find strength."

Using autumn leaves as a central motif, the exhibition symbolizes the gentle transitions of life. Ambury hopes visitors will find a shared sense of comfort and reflection, recognising that grief, though deeply personal, connects us all.



Artwork by Ambury Hall